

# melogranoblu

## ARTUSI 01 suspension

design E. Rocchi & M. Crema - 2019

### DESCRIPTION

Suspension lamp with glass body, suspended with a round metal support. Various finishes.

Environment:	Indoor
Mounting:	Ceiling
Canopy:	Round shape varnished dark grey metal
Structure:	Varnished dark grey metal
Body:	Metallized hand blown glass
Pendant:	Frosted ruled hand blown glass
Power supply cable:	Coated fabric cable colour 09 DARK GREY

### TECHNICAL FEATURES

Light source: 6 watt, 2800 K **G9** LED bulb (not included)

Connection: 100 - 240 Vac, 50/60 Hz

Cable length: 2,00 m standard - extensible on demand

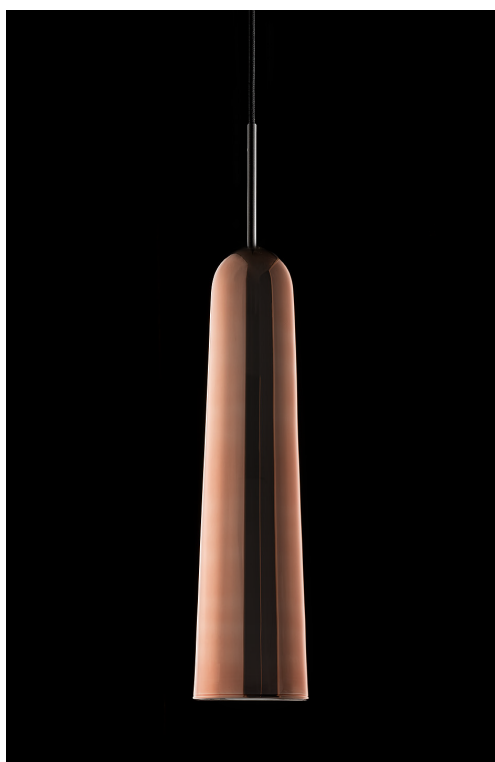
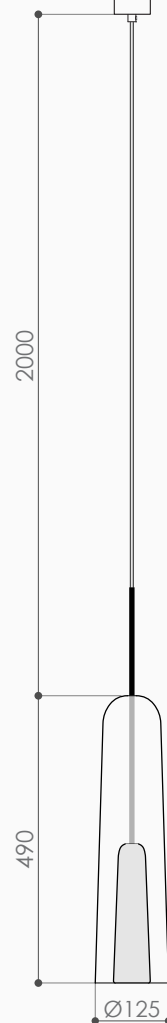
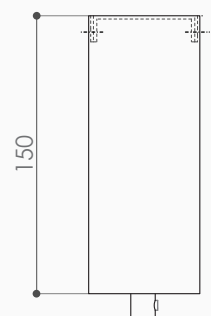
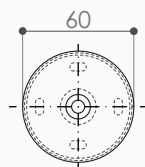
Weight: 1,6 kg

dimensions in mm

**IP20**



**LED**



# melogranoblu

## ARTUSI 02 suspension

design E. Rocchi & M. Crema - 2019

### DESCRIPTION

Suspension lamp with glass body, suspended with a round metal support. Various finishes.

Environment:	Indoor
Mounting:	Ceiling
Canopy:	Round shape varnished dark grey metal
Structure:	Varnished dark grey metal
Body:	Metallized hand blown glass
Pendant:	Frosted ruled hand blown glass
Power supply cable:	Coated fabric cable colour 09 DARK GREY

### TECHNICAL FEATURES

Light source: 6 watt, 2800 K **G9** LED bulb (not included)

Connection: 100 - 240 Vac, 50/60 Hz

Cable length: 2,00 m standard - extensible on demand

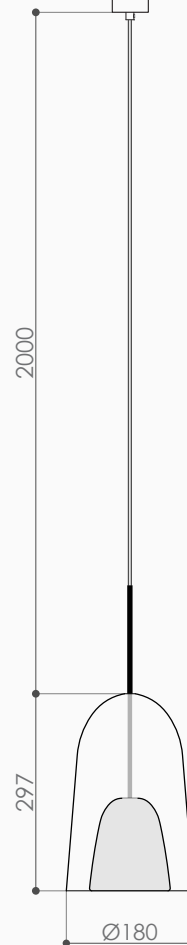
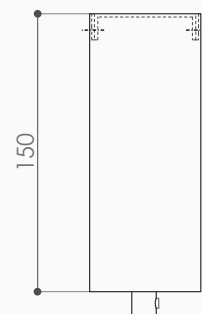
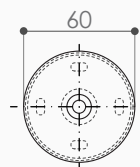
Weight: 1,6 kg

dimensions in mm

**IP20**



**LED**



# melogranoblu

## ARTUSI 03 suspension

design E. Rocchi & M. Crema - 2019

### DESCRIPTION

Suspension lamp with glass body, suspended with a round metal support. Various finishes.

Environment:	Indoor
Mounting:	Ceiling
Canopy:	Round shape varnished dark grey metal
Structure:	Varnished dark grey metal
Body:	Metallized hand blown glass
Pendant:	Frosted ruled hand blown glass
Power supply cable:	Coated fabric cable colour 09 DARK GREY

### TECHNICAL FEATURES

Light source: 6 watt, 2800 K **G9** LED bulb (not included)

Connection: 100 - 240 Vac, 50/60 Hz

Cable length: 2,00 m standard - extensible on demand

Weight: 1,6 kg

dimensions in mm

**IP20**



**LED**

