

oluce

Milano dal 1945

SPACE
lighting + living

"The oldest Italian lighting design company."

Ex-works USD - Italy

Atollo by Vico Magistretti



Atollo Opaline: #236 Small 14" \$1,285 - #237 Medium 20" \$1,775 - #235 Large 28" \$2,975



Atollo Black Nickel:



- #238 Small 14" - \$1,825
- #239 Medium 20" - \$2,485
- #233 Large 28" - \$3,825



Atollo Bronze: #238 Small 14" \$1,495 -#239 Medium 20" \$1,995 -#233 Large 28" \$2,995





Atollo Black:

#238Small 14"-\$1,285

#239Medium 20" -\$1,815

#233Large 28" -\$2,525





Atollo Gold: #238 Small 14" \$2,595 #239 Medium 20" \$ 1,890 #233 Large 28" \$3,950

BULGARI HOTEL LOUNGE- TOKYO



HILTON HOTEL – MILAN

Studio THDP Design





Coupé arched

by Joe Colombo

Coupé 3320R:

Black or white 74.8"/94.4" - \$6,225











Superluna by Victor Vasilev



Superluna Floor 397: 69" Black \$2,995 - Anodic brass & black stem \$3,345

Las

By Noa Ikeuchi and
Tommaso Nani



Las 376: Black or Black grey 69.7" - \$5,595







Switch from Nendo #206 Gold 3,925 #206 Black \$2,565





Coupé 3321: 55" Gold (Limited edition) \$3,255 -Black or White \$1,965

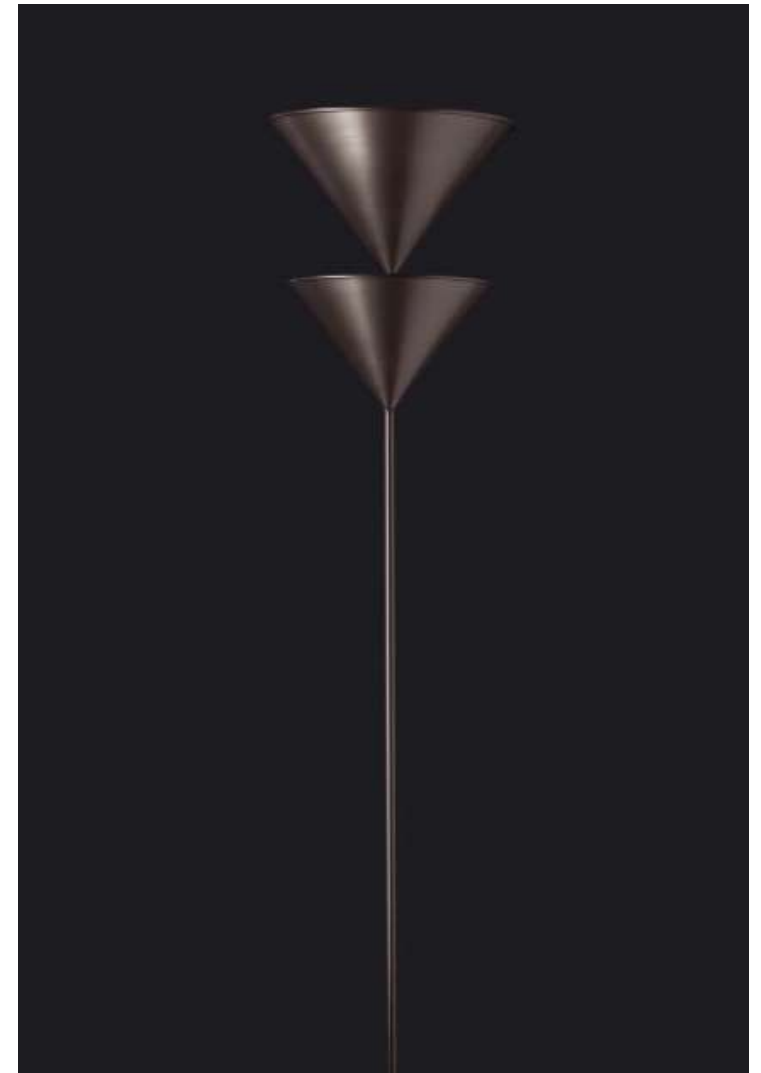






Agnoli 387: Nickel/plated 74.9" - \$1,855





Pascal 345L \$3,795



Switch from Nendo

#306 Gold \$4,425

#306 Black \$2,815





G.O. floor 352: Black, Bronze or Red 56"x30.3" - \$1,675

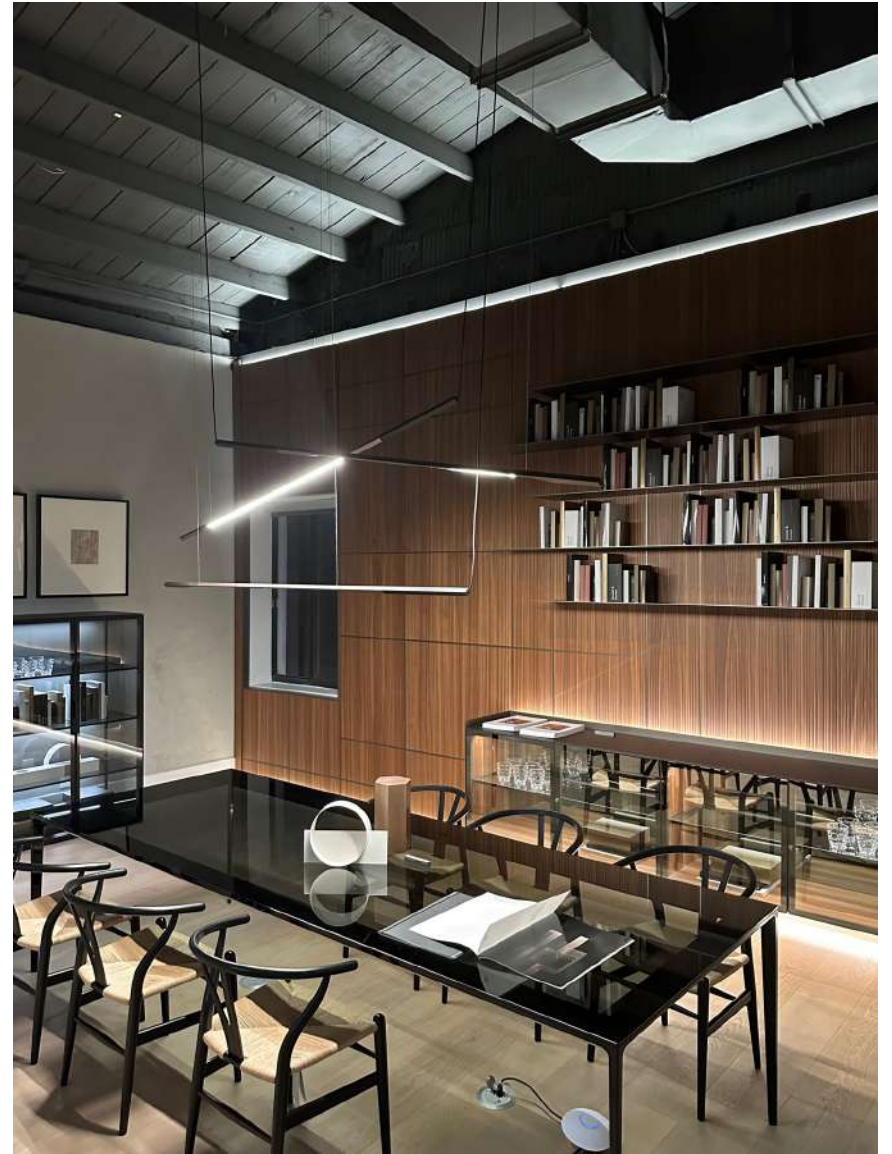
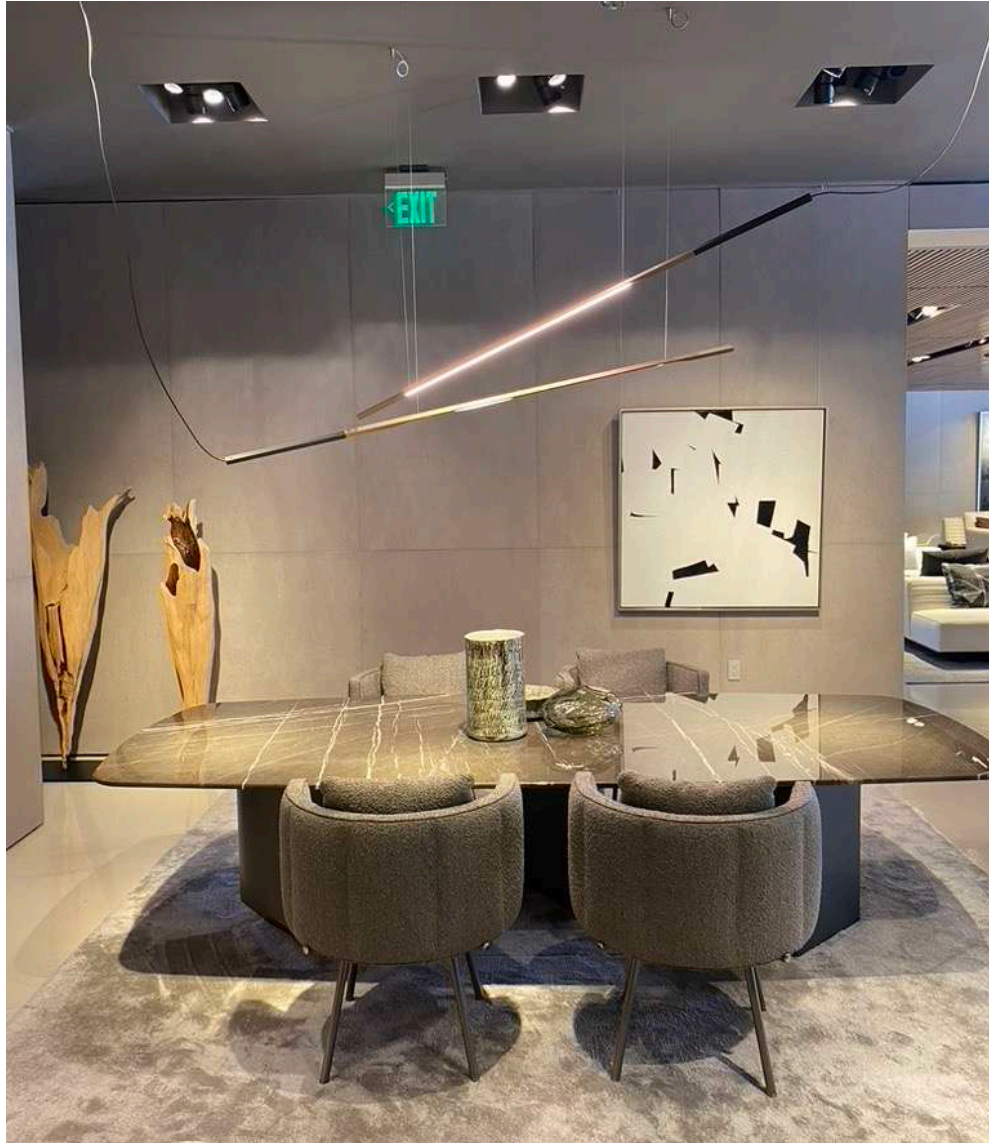


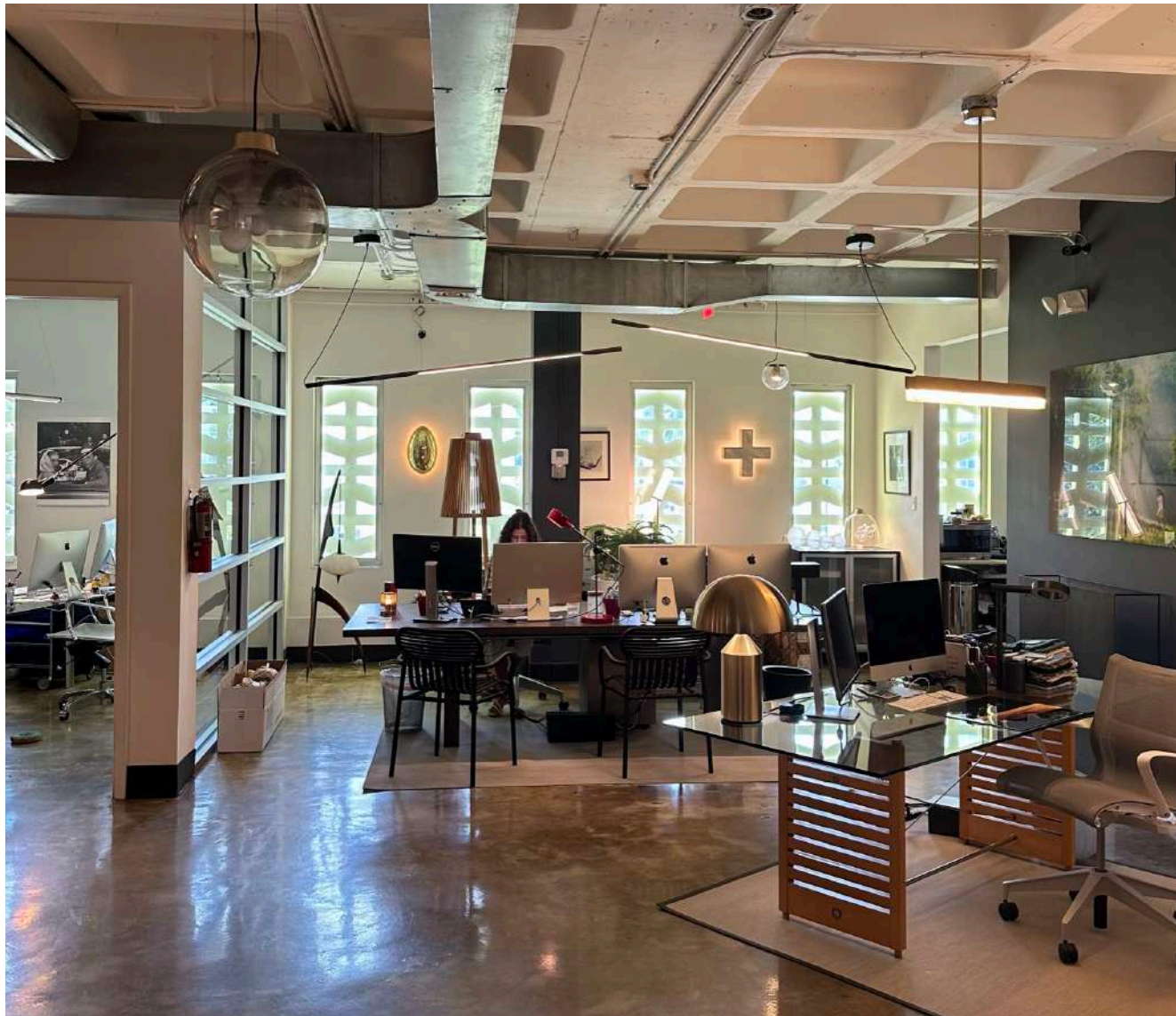


Ilo by David Lopez Quincoces



Ilo Wall 187: Metal Anodized satin bronze/matt black 15" - \$1,175
Ilo Pendant 487: Metal Anodized satin bronze/matt black 75" - \$2,895







Sonora by Vico Magistretti



Sonora PMMA 490: white or Black painted out and Gold leaves 35,4"diam - \$4,985





Sonora Opaline #438 15" \$1,285 #411 20" \$1,875





Sonora PMMA

#490 Bl 35.4" \$3,185

#493 Bl 52.4" \$7,955



Berlin by Christophe Pillet



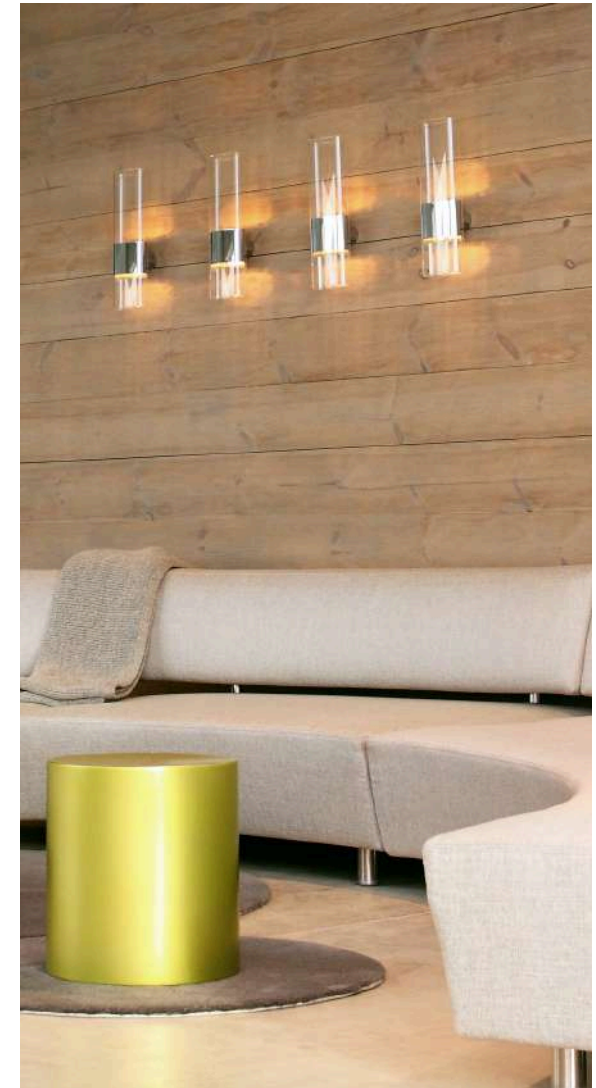
Berlin: Anodized brass **#720** 11,8" \$1,155 - **#721** 15,7" \$1,415 - **#722** 20" \$1,835



Line by Francesco Rotta



Line : #147 11,8" \$995 #149 16,9" \$1,085





The Globe

#827 Gold \$1,575

#827 Nickel \$1,485

#828 Sat- Gold \$1,915

#828 Nickel plat \$1,895





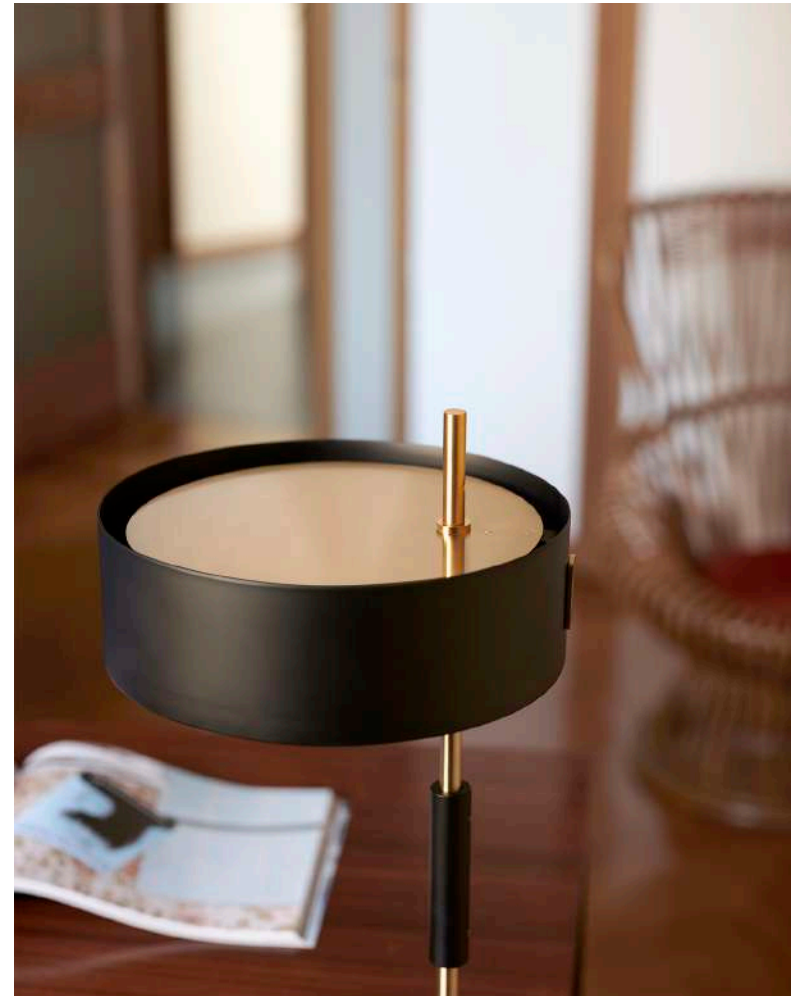
1953 COLLECTION 1953

The lamp 1953 comes in two models, floor and table lamps.

The whole lampshade section shifts from the centre to the side. This model evokes the style of those years, such as the use of a shade in the classic cylindrical shape and the contrast of the satin gold - stem and interior lens hood disc - against the black - the exterior and interior of the shade, the base and the stem grip. Decorative but with a clean design, 1953 attests the capability of Oluce to produce objects capable of transcending fashions and eras.



1953 by Ostuni & Forti

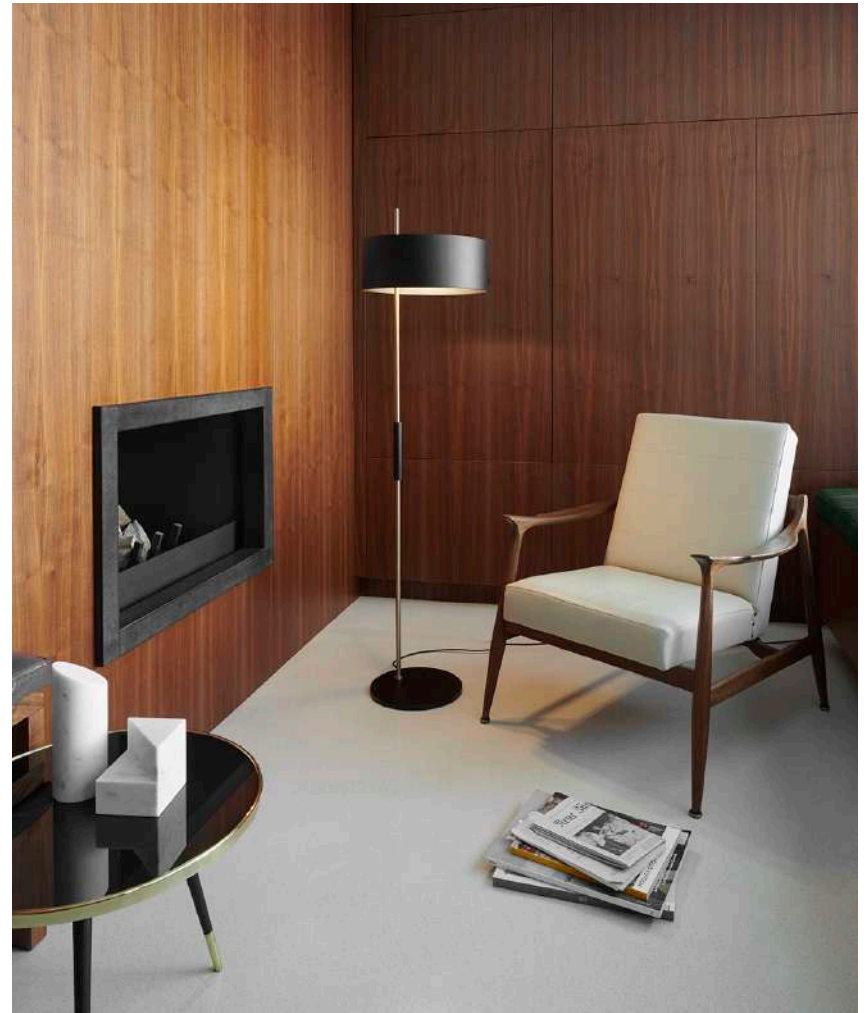


1953 Table 243: Matt black/Gold 18.9" - \$1,995





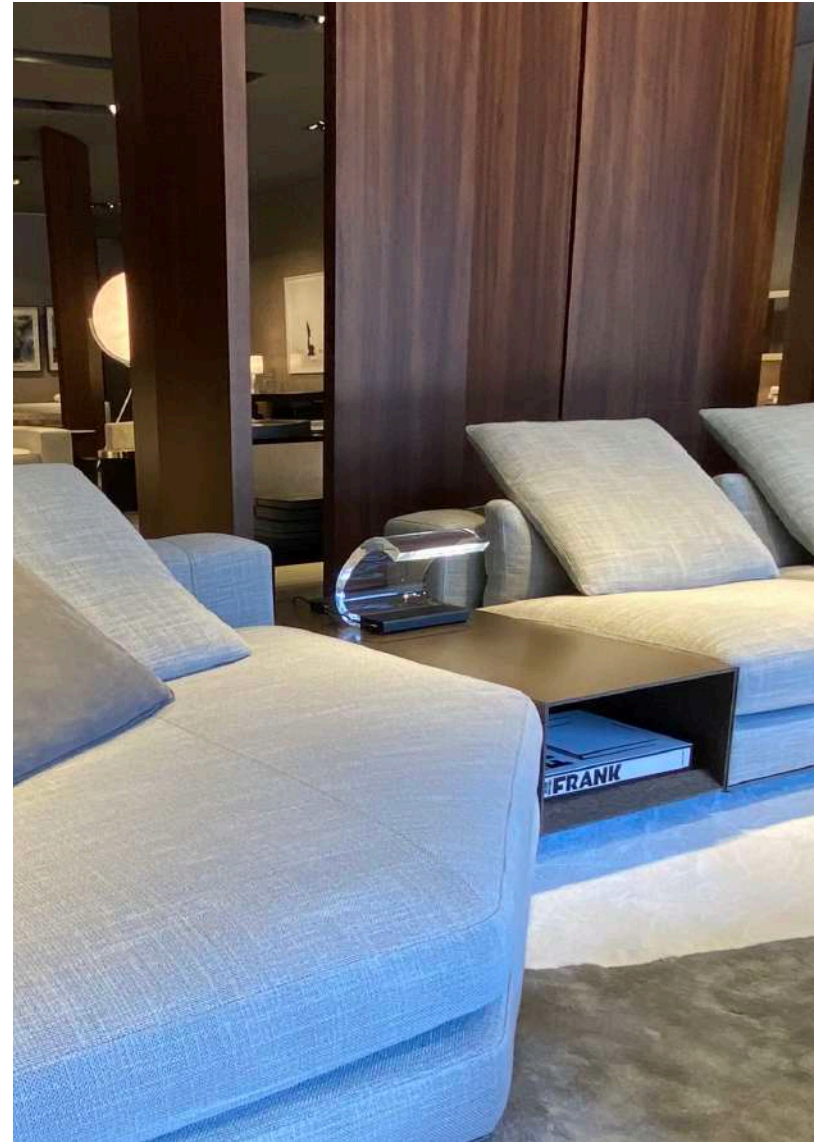
1953 Table 243: *Matt black/Gold 18.9" - \$3,105*

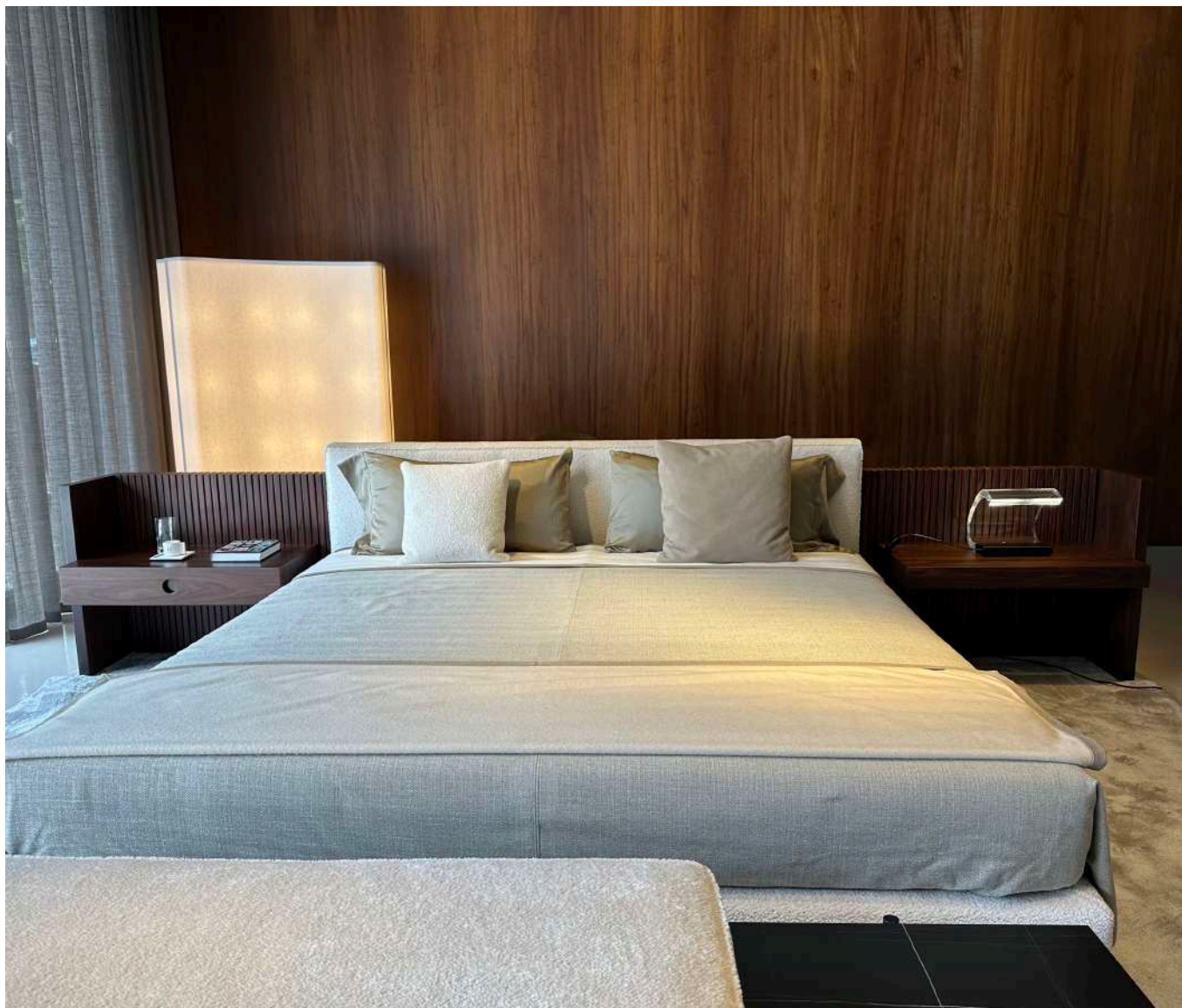




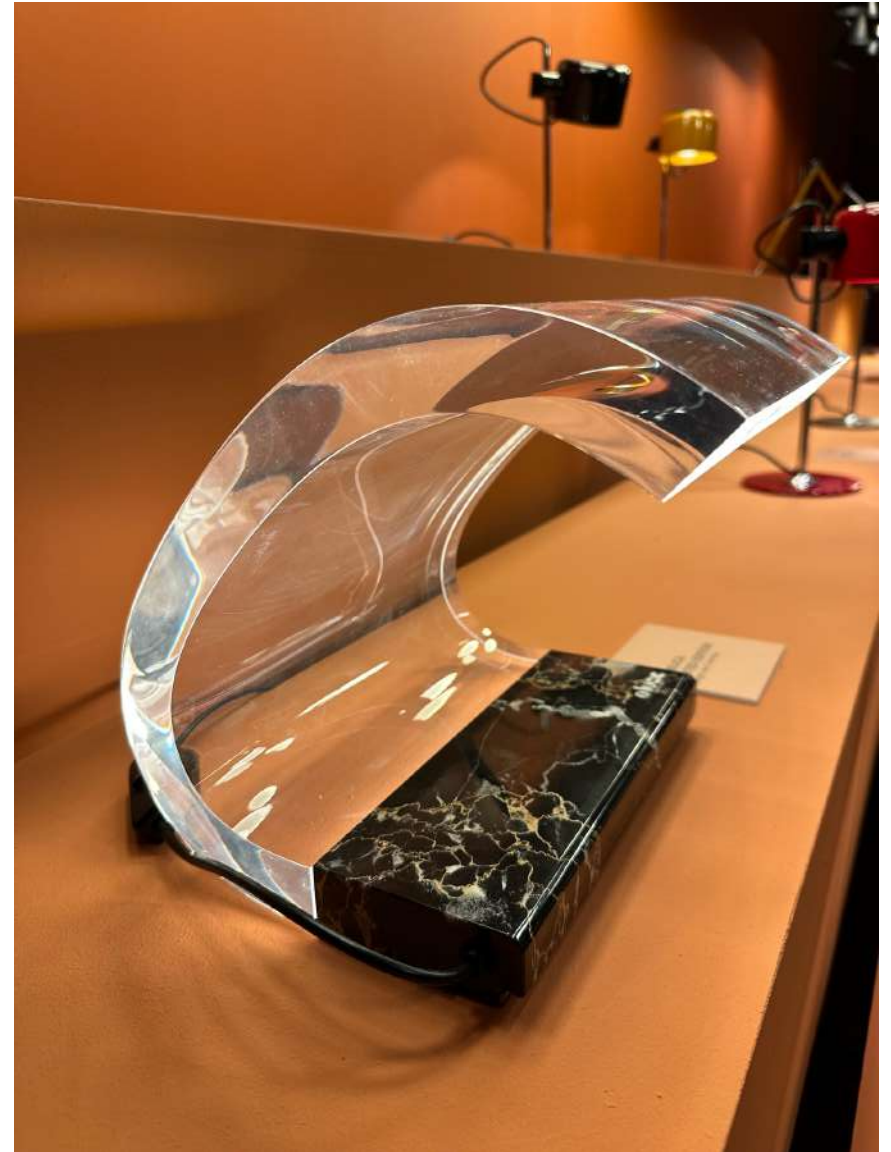
Cylinda: Matt black/Gold 18.9" - \$1,665

Acrilica -by Joe Colombo



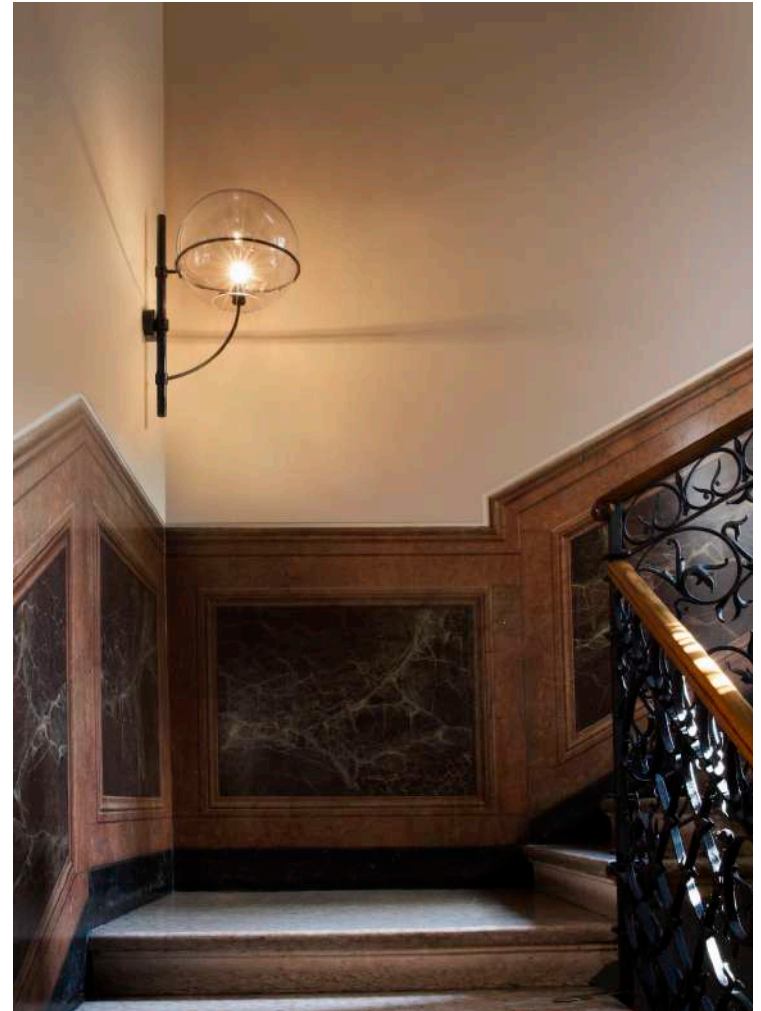


Acrilica Marble -by Joe Colombo \$7,495





Lyndon Wall: #160 Black 20" \$2,205 -



#160M Black 15.5" \$1,855 49