



oluce

Milano dal 1945

SPACE  
lighting + living

"The oldest Italian lighting design company."

FOB Miami USD

# Atollo by Vico Magistretti



#236 Small 14" \$1,385 - #237 Medium 20" \$1,935 - #235 Large 28" \$3,225





## Atollo Black Nickel:



#238 Small 14"- \$1,825, #239 Medium 20"- \$2,485, #233 Large 28"- \$3,825

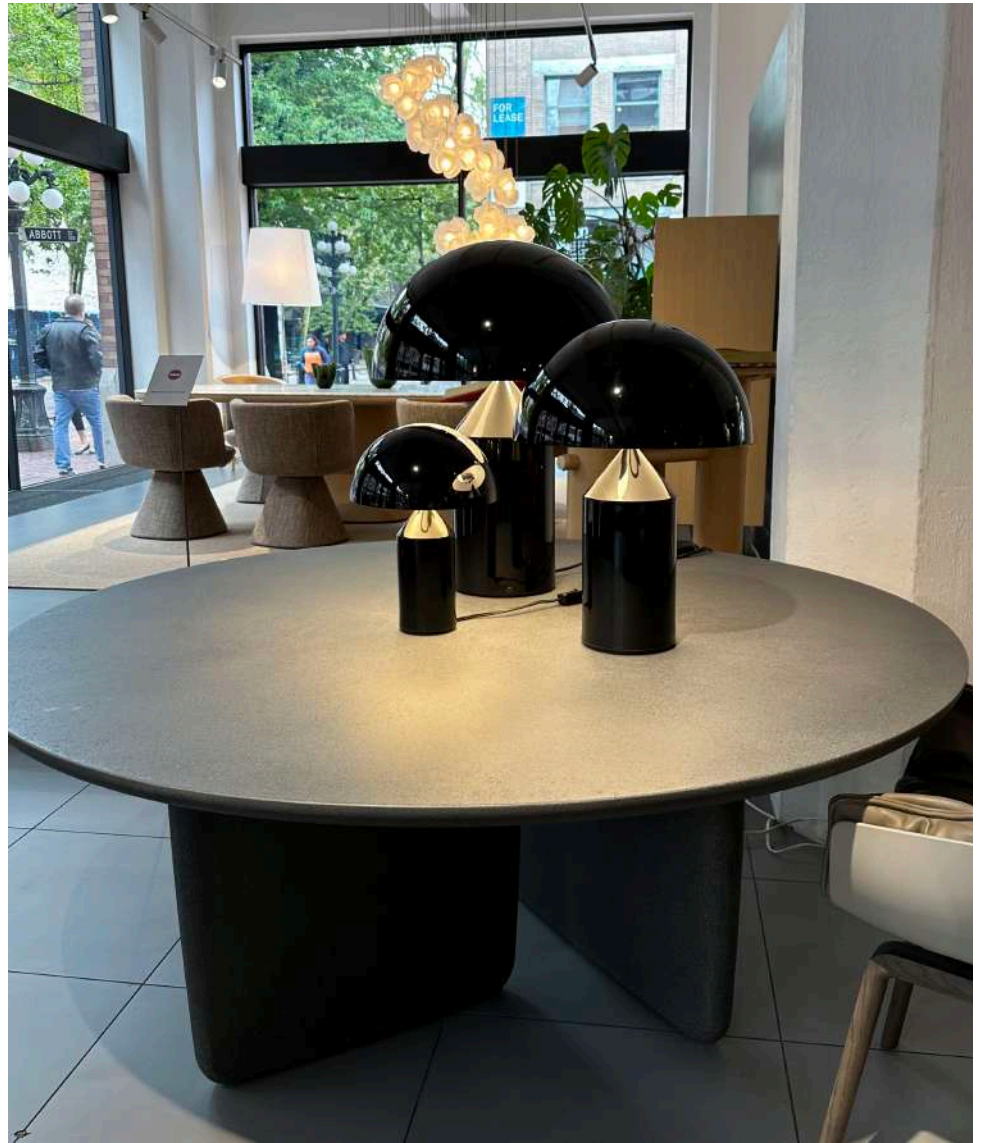


# Atollo Bronze:

#238 Small 14" \$1,495 - #239 Medium 20" \$2,055 - #233 Large 28" \$3,015







## Atollo Black:

- #238Small 14" - \$1,285
- #239Medium 20" - \$1,815
- #233Large 28" - \$2,525









**Atollo Gold:** #238 Small 14" \$1,895 #239 Medium 20" \$ 2,595 #233 Large 28" \$3,995





## BULGARI HOTEL LOUNGE- TOKYO





# HILTON HOTEL – MILAN

Studio THDP Design

---







# Coupe arched

by Joe Colombo

## Coupé 3320R:

Black or white 74.8"/94.4" - \$6,225



























# Superluna by Victor Vasilev



**Superluna Floor 397:** 69" Black \$3,025 - Anodic brass & black stem \$3,345





# Las

By Noa Ikeuchi and  
Tommaso Nani



**Las 376:** Black or Black grey 69.7" - \$5,595













Switch from Nendo #206 Gold 3,925 #206 Black \$2,565











**Switch floor** from Nendo  
#306 Gold \$4,425. #306 Black \$2,815



# Coupé 3321 by Colombo



55" Gold (Limited edition) \$3,255 -Black or White \$1,965











## Agnoli 387 by Tito Agnoli



Nickel/plated 74.9" - \$1,855





SEATING SYSTEM -  
KUPIDO K3822 FABRIC:  
PEWTER COLOUR BASE  
JAN COFFEE TABLES -  
PEWTER COLOUR BASE  
EUCALYPTUS,  
SAHARA NOIR MARBLE TOPS  
NFC 2 BOOKCASES -  
HEM CARPET -

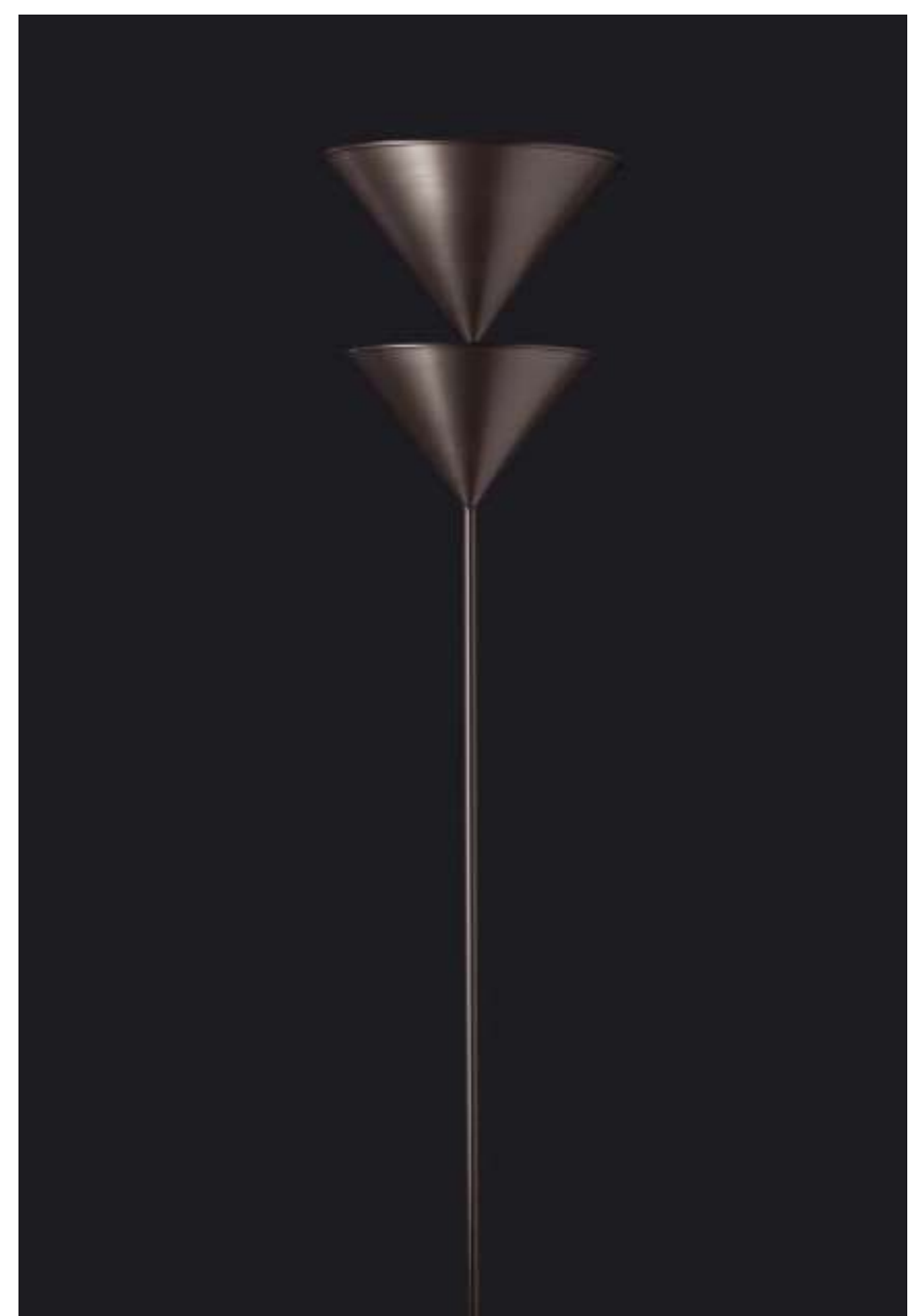
SISTEMA DI SEDUTE -  
TESSUTO KUPIDO K3822  
BASAMENTO PELTRO  
TAVOLINI JAN -  
BASAMENTO PELTRO,  
PANI EUCALITTO,  
MARMO SAHARA NOIR  
LIBRERIE NFC 2 -  
TAPPETO HEM -











Pascal 345L by Vico Magistretti \$3,795



**G.O 352** by Giuseppe Ostuni (floor): Black, Bronze, Red 56"x30" \$1,675







## Ilo by David Lopez Quincoces

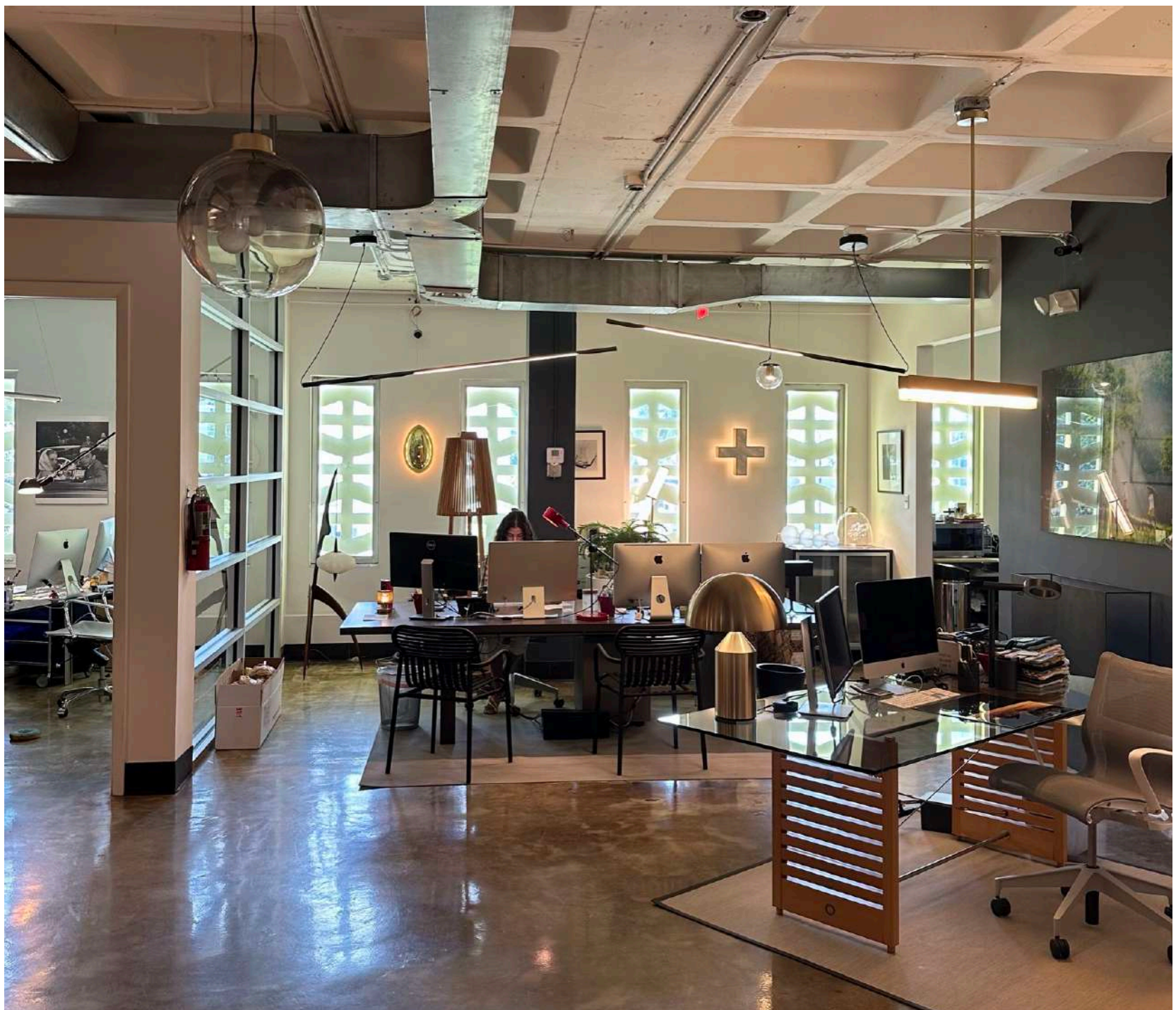


Wall 187: Metal Anodized satin bronze/matt black 15" - \$1,175  
 Pendant 487: Metal Anodized satin bronze/matt black 75" - \$2,895











## Sonora by Vico Magistretti



**Sonora PMMA 490:** white or Black painted out and Gold leaves 35,4" diam - \$4,985







**Sonora Opaline** #438 15" \$1,285    #411 20" \$1,875





## **Sonora PMMA**

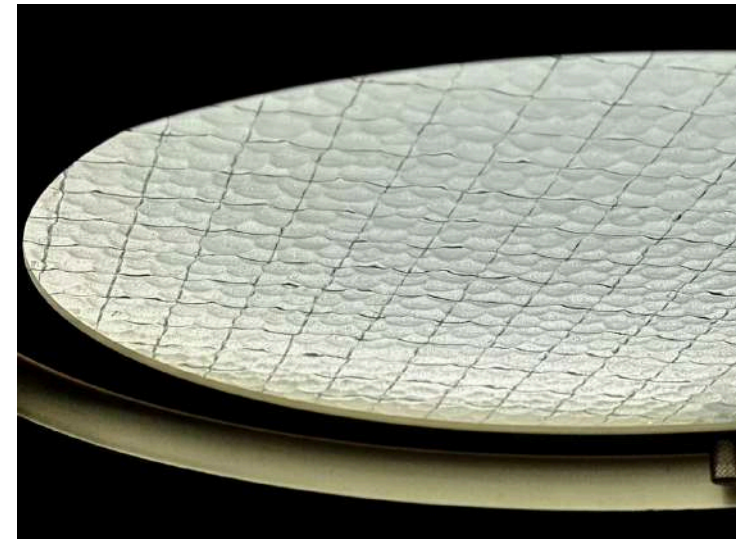
#490 Bl 35.4" \$3,185

#493 Bl 52.4" \$7,955





Berlin by Christophe Pillet



**Berlin:** Anodized brass **#720** 11,8" \$1,155 - **#721** 15,7" \$1,645 - **#722** 20" \$1,835

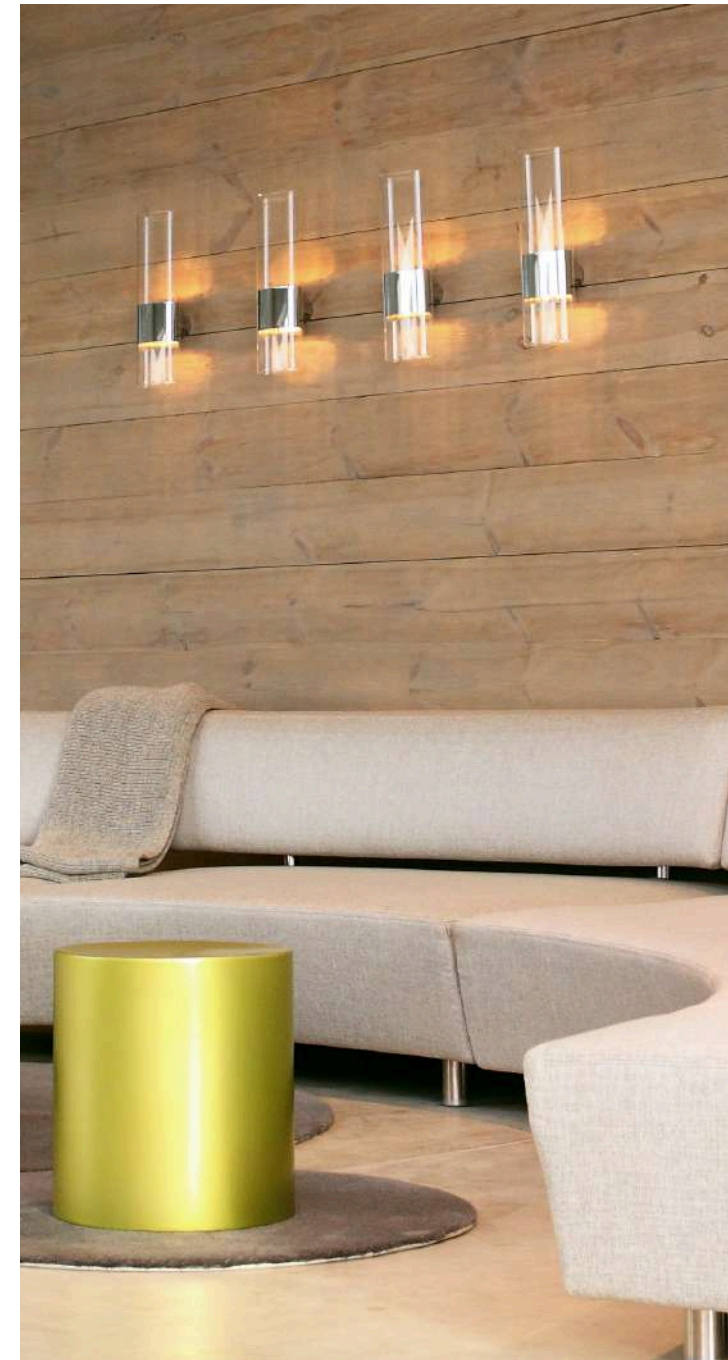




## Line by Francesco Rotta



**Line : #147** 11,8" \$1,005 **#149** 16,9" \$1,085





### The Globe

#827 Gold \$1,575

#827 Nickel \$1,485

#828 Sat- Gold \$1,915

#828 Nickel plat \$1,895







## 1953 COLLECTION

### 1953

The lamp 1953 comes in two models, floor and table lamps.

The whole lampshade section shifts from the centre to the side. This model evokes the style of those years, such as the use of a shade in the classic cylindrical shape and the contrast of the satin gold - stem and interior lens hood disc - against the black - the exterior and interior of the shade, the base and the stem grip. Decorative but with a clean design, 1953 attests the capability of Oluce to produce objects capable of transcending fashions and eras.

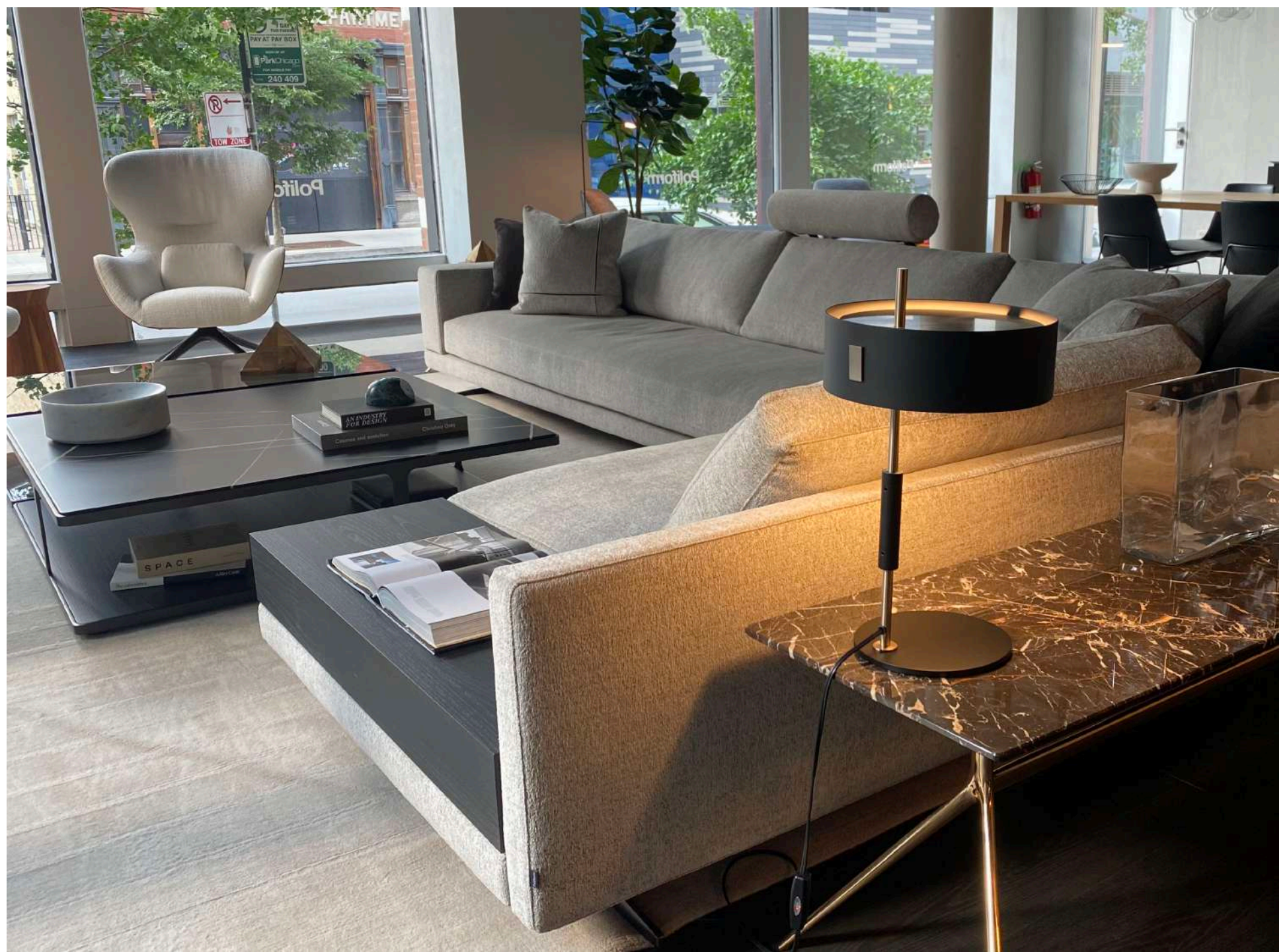


# 1953 by Ostuni & Forti



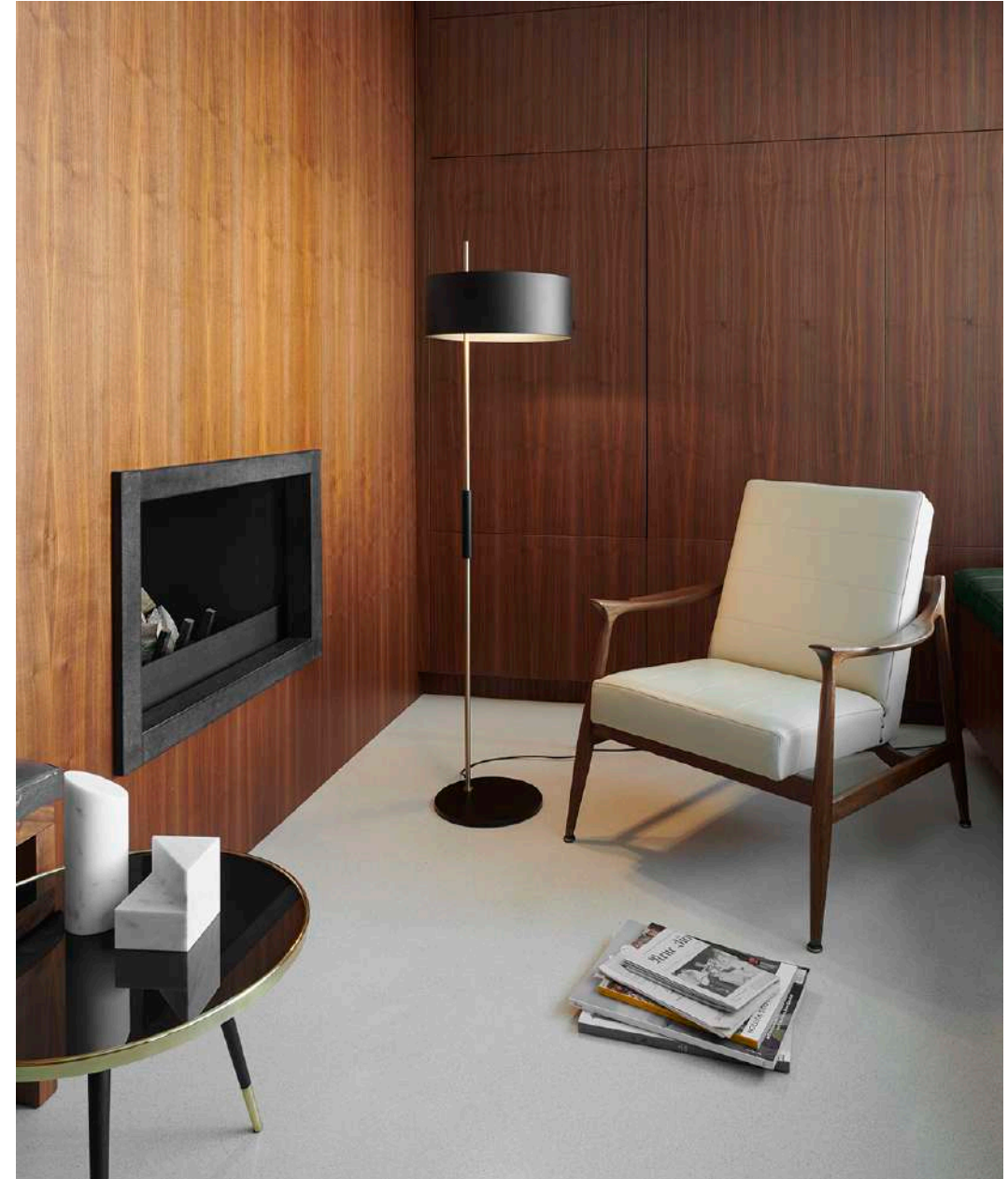
**1953 Table 243:** Matt black/Gold 18.9" - \$2,045







**1953 Table 243:** *Matt black/Gold 18.9" - \$3,105*



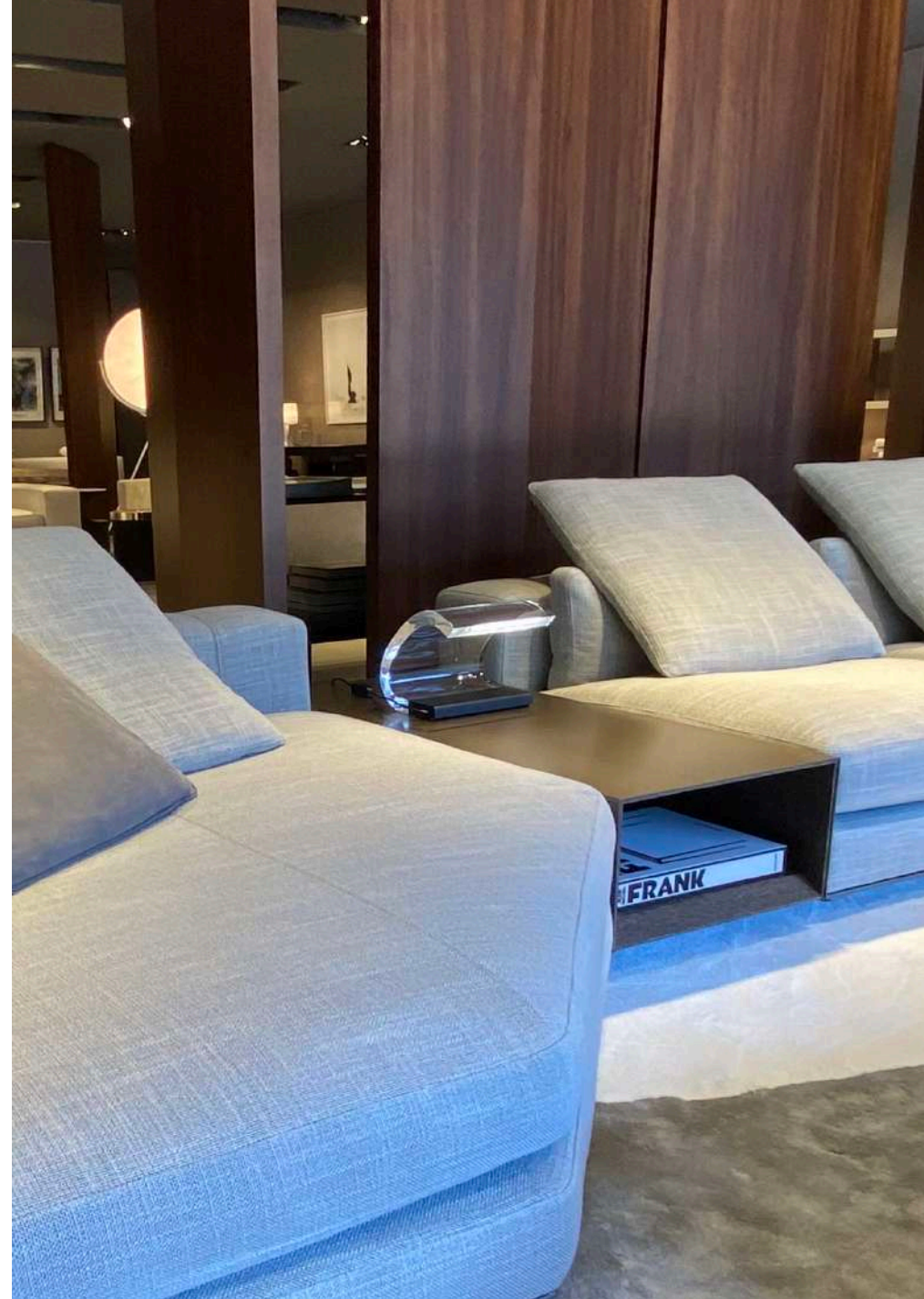




**Cylinda:** *Matt black/Gold 18.9" - \$1,665*



# Acrilica -by Joe Colombo

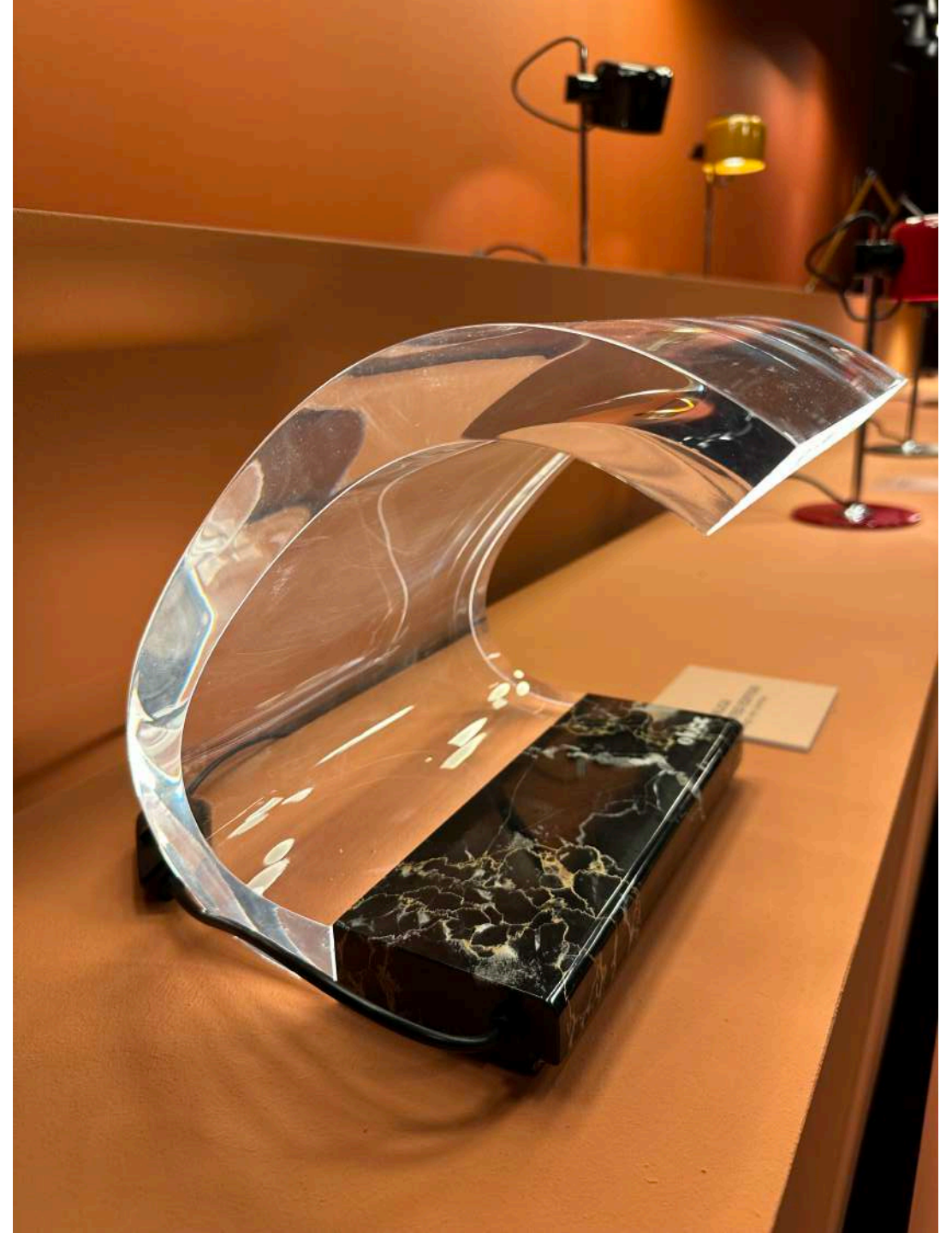








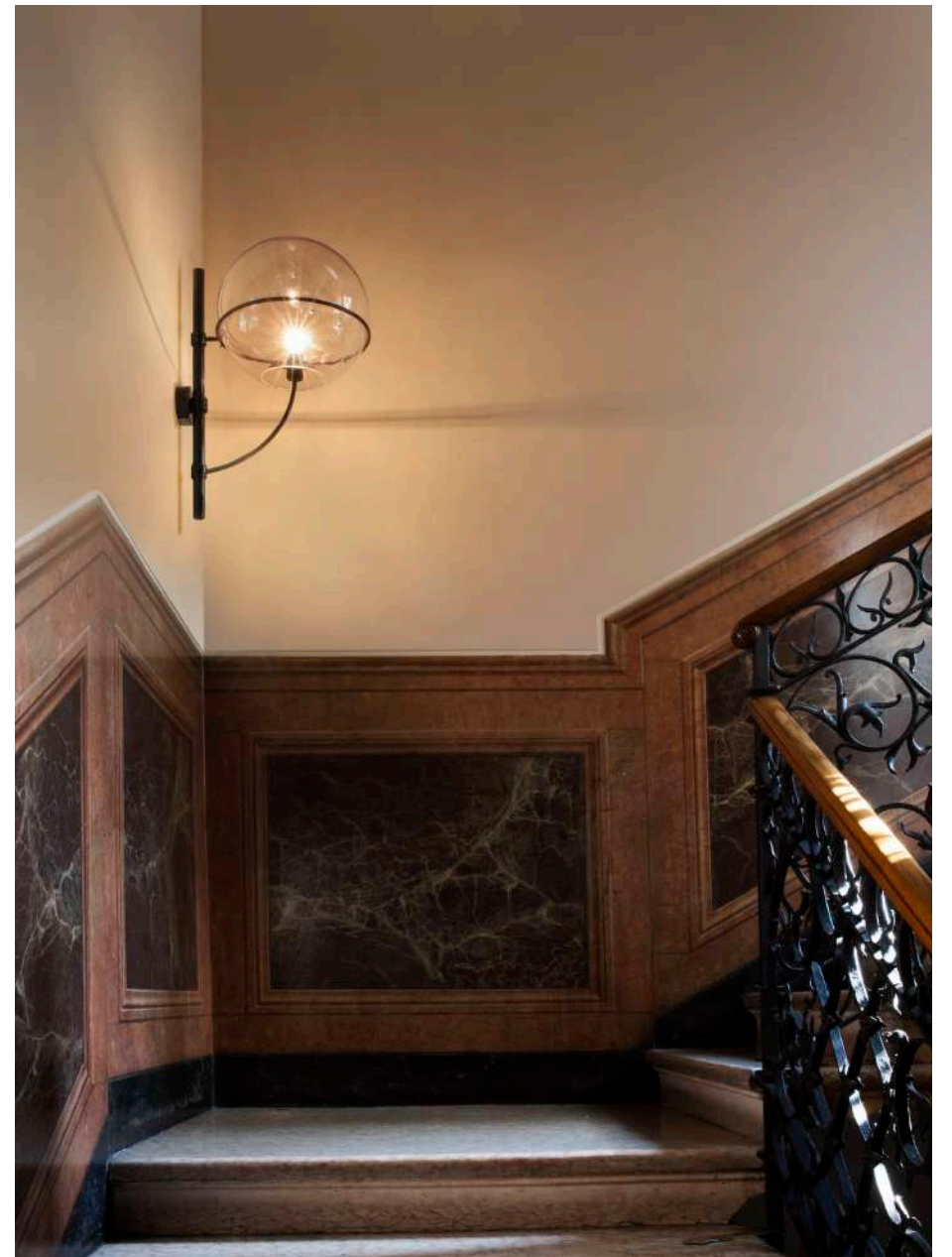
Acrilica Marble - by Joe Colombo \$6,995







Lyndon Wall: #160 Black 20" \$2,205



#160M Black 15.5" \$1,855





Visit us at:

<https://www.spacelighting.com>

For additional information please contact:

Retail = Jean-Laurent Raphael at +1 305 4909777 [jl@spacelighting.com](mailto:jl@spacelighting.com)